

# GRAVITY GI

INTERNATIONAL PRINT & DESIGN

LEVEL 1 B-BBEE ACCREDITED



EVALUATE • INNOVATE • CREATE

# FUTURE FUSION

TECHNOLOGIES

POINT OF PURCHASE DESIGN & MANUFACTURE

## Our Vision

To differentiate ourselves within the industry by offering unequivocal and unsurpassed service to our clients, assisting them to establish and expand their brands. To provide point of purchase and print solutions utilising cutting edge design and producing unparalleled quality. Whatever your business needs we can provide a total solution from concept to delivery.

## Our Expertise

At Future Fusion Technologies, we pride ourselves at being a one stop shop. Customer satisfaction, quality and turnaround is our forte. We believe that, as the experts in our field, we need to simplify and streamline the process as far as possible, making our valued clients experience as uncomplicated as possible. Being both the creative agency and the manufacturer, we can control the entire project lifecycle directly, by managing workflows within our environment, ensuring the highest quality and standards at the fastest turnaround times in the industry.

Our capabilities are as follows:

**Studio:** We have a fully fledged studio which includes graphic design, rendering, DTP, structural design, industrial and product design.

**Production:** We design and produce all point of sale and point of purchase products including flat print, corrugate, permanent, plastic fabrication and vacuum formed units. This will include base wraps, hanging mobiles, wobblers, washline banners, posters, FSU's, GE cladding, CTU's, PSU's, etc.

Our internal production capabilities include litho, silkscreen, automated lamination, automated gluing, die cutting, assembly, vacuum forming, plastic fabrication, metal fabrication, etc.

We deal directly or indirectly with large FMCG companies, as well as multiple agencies, both on an agency and production level. Collectively, we have a huge amount of experience and will definitely be able to satisfy any requirements you might have. If there isn't a solution to our clients dilemma, we will create one.

## Our Advantage

By having two companies acting as one it enables our clients to benefit from our inclusive services by enjoying the convenience of a one stop service.

## Empowerment Policy

We are a 100% Black Owned organisation Accredited with a level 1 B-BBEE Rating with a score of 105%. Our Staff Compliment comprises 99% inclusion of previously disadvantaged individuals. Team work and effective communication are vital in understanding the needs and expectations of both staff and clients. We make use of youth, females and if possible disabled individuals from previously disadvantaged communities when gearing up our staff compliment to meet our clients aggressive turnarounds for specific projects. This serves a dual purpose of job creation and poverty alleviation.

## Social Upliftment

We have always strived to shoulder our share of community responsibility. We do so by sponsoring projects for various social, sporting, cultural and religious organisations. This active involvement has brought renewed sense of value and humanity to all that we pledge to do.

# • EVENT ACCREDITATION

EVENT ACCESS CARDS • AREA SIGNAGE • TENT CARDS • INVOICE BOOKS • COMPLIMENTARY SLIPS • COMPANY PROFILES



EVENT ACCREDITATION



EVENT ACCREDITATION



EVENT SIGNAGE



EVENT SIGNAGE



ACCESS CARDS



TICKETS



ACCESS CARDS

WE ASSIST BUSINESSES IN GETTING MAXIMUM EXPOSURE WHETHER IT BE FOR EVENT OR CORPORATE FUNCTIONS. MAKE YOUR STATIONERY REPRESENT YOUR COMPANY.

# • FLAT SHEET PRINTING

ENTRY FORMS • VOUCHERS • LEAFLETS • FLYERS • PRICE BOARDS • WOBBLERS • LABELS • CATALOGUES • CALENDARS • POSTERS • BOOKLETS



PRODUCT INFORMATION LEAFLETS



ENTRY FORMS AND LEAFLET VOUCHERS



LABELS & STICKERS



CATALOGUES & BROCHURES



POSTERS

WOBBLERS



CALENDARS

# • CORPORATE STATIONERY

CATALOGUES • COMPLIMENTARY SLIPS • INVOICE BOOKS • BOOKLETS



CORPORATE STATIONERY



STAFF PADS

# TEMPORARY AND SEMI PERMANENT UNITS

FLOOR STANDING UNITS • DUMPBINS • PARASITE UNITS • GRAVITY FEEDERS • STANDEES • PALLET DISPLAYS • COUNTER UNITS



CORRUGATED FSU



CORRUGATED 3 SIDED FSU



CORRUGATED FSU



CORRUGATED FSU



CORRUGATED FSU



SEMI PERMANENT FSU



CORRUGATED 3 SIDED FSU



CORRUGATED FSU



CORRUGATED FSU + PARASITE ADD ON



CORRUGATED FSU



CORRUGATED FSU



CORRUGATED DUMPBIN + HOC



CORRUGATED DIVIDER DUMPBIN + HOC



CORRUGATED DIVIDER DUMPBIN



CORRUGATED DIVIDER DUMPBIN



SEMI PERMANENT HOTSPOT UNIT



CORRUGATED HOTSPOT UNIT



VAC HOTSPOT UNIT



PARASITE UNIT



LEAFLET HOLDER

**CONTACT DETAILS**

Office : 011 022 7868/9  
 Fax : 086 571 9657  
 Email : sales@gravityprint.co.za  
 Website : www.gravityprint.co.za

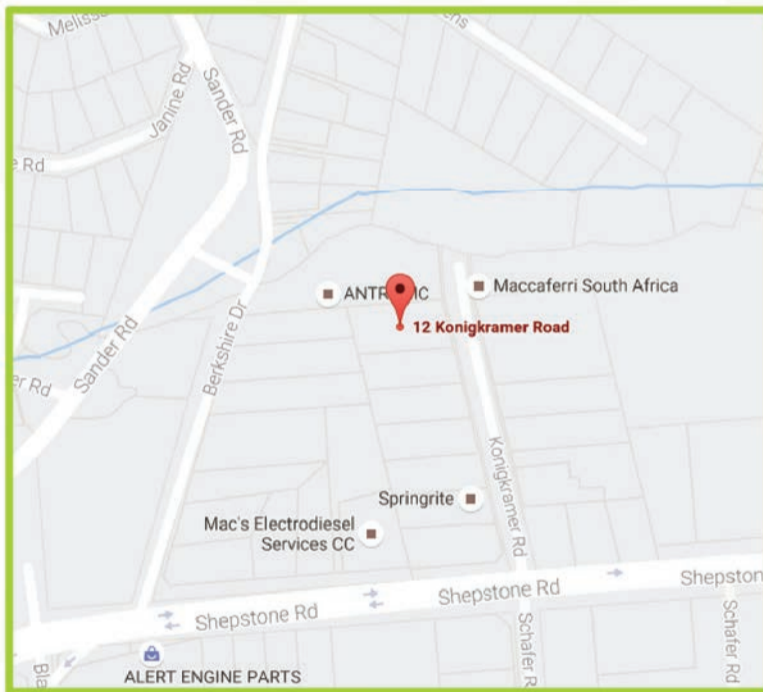
Address : 6 Theodore Road  
 Benrose  
 Johannesburg  
 2011



**CONTACT DETAILS**

Office : 087 808 7952  
 Fax : 031 705 2510  
 Email : sales@futurefusion.co.za  
 Website : www.futurefusion.co.za

Address : 12 Konigkramer Road  
 New Germany  
 Durban  
 3610



The key to our success is service.

Make us your first call and guaranteed, it's the only call you'll need to make.

# PERMANENT UNITS

FLOOR STANDING UNITS • DUMPBINS • PARASITE UNITS • GRAVITY FEEDERS



PERMANENT DISPLAY STAND



PERMANENT GONDOLA END UNIT



PERMANENT GONDOLA END UNIT

# • AISLE BRIDGE AND GE CLADDINGS

AISLE BRIDGES • GONDOLA ENDS • POWERWINGS •



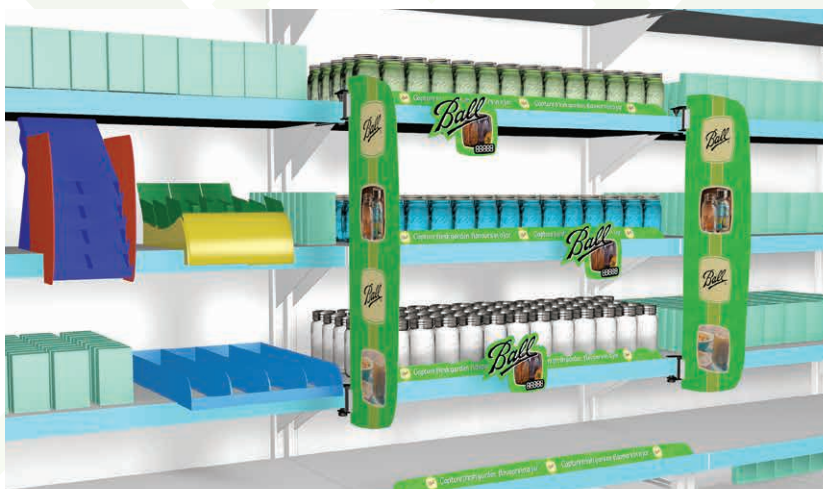
AISLE BRIDGE + GE CLADDING



AISLE BRIDGE + GE CLADDING

# • ON-SHELF SOLUTIONS

AISLE BLADES • SHELF DEFENDERS • SHELF TALKERS • SHELF FRONTS • WOBLERS • PRICE CARDS



ON-SHELF SOLUTIONS - AISLE BLADE, SHELF DEFENDER & WOBLER



ON-SHELF SOLUTIONS - AISLE BLADE, SHELF DEFENDER & WOBLER